

SOLAR AND OPTICAL PROPERTIES

SOLAR GAIN

The amount of heat increase resulting from solar energy entering a room. It is the total of three separate parts - the amount of energy transmitted directly into the room, the energy which is absorbed by the blind and a proportion of the energy which is absorbed by the window.

SHADING CO-EFFICIENT

The solar heat gain with the blind at the window divided by the solar heat gain with no blind at the window. The lower the shading co-efficient, therefore, the higher the efficiency of the fabric.

UNICOLOUR® SOLAR AND OPTICAL PERFORMANCE																		
	Solar			Visible			UV Block %	Solar Block %	QRF	CF	GTOT				SC			
	RS %	TS %	AS %	RV %	TV %	AV %					SG	DG	DGLE	TGLE	SG	DG	DGLE	TGLE
Naro	73	17	10	78	15	7	95	83	8	6	0.31	0.33	0.33	0.33	0.36	0.38	0.38	0.38
White	73	15	12	81	14	6	100	85	8	6	0.30	0.33	0.33	0.33	0.34	0.38	0.38	0.38
Shell	71	19	11	79	18	3	100	81	8	6	0.32	0.34	0.34	0.33	0.37	0.39	0.39	0.38
Cream	68	15	17	75	14	11	100	85	7	6	0.33	0.35	0.36	0.35	0.38	0.40	0.41	0.41
Beige	58	7	35	62	5	33	100	93	6	6	0.36	0.39	0.40	0.38	0.41	0.44	0.46	0.44
Taupe	41	3	56	44	1	54	100	97	4	6	0.44	0.46	0.47	0.44	0.50	0.53	0.55	0.51
Chocolate	18	0	81	18	0	81	100	100	2	6	0.55	0.56	0.58	0.52	0.64	0.64	0.66	0.60
Dove	44	4	52	48	2	49	100	96	5	6	0.42	0.45	0.46	0.43	0.49	0.51	0.53	0.49
Ash	37	3	60	37	1	61	100	97	4	6	0.46	0.48	0.49	0.46	0.53	0.55	0.57	0.52
Charcoal	19	0	81	20	0	80	100	100	2	6	0.55	0.56	0.57	0.52	0.63	0.55	0.66	0.59
Flint	25	1	74	24	0	75	100	99	2	6	0.57	0.56	0.49	0.46	0.65	0.65	0.56	0.53
Kara	14	0	86	13	0	87	100	100	1	6	0.63	0.62	0.52	0.50	0.73	0.72	0.60	0.57
Black	6	0	94	6	0	94	100	100	1	6	0.62	0.62	0.64	0.56	0.71	0.71	0.73	0.65
Luna	63	11	27	70	8	22	100	89	7	6	0.36	0.38	0.37	0.36	0.42	0.44	0.42	0.41
Rayon	53	12	35	30	2	67	100	88	4	6	0.42	0.43	0.40	0.38	0.48	0.49	0.46	0.44
Red	47	12	41	16	1	83	100	88	3	6	0.43	0.44	0.45	0.42	0.49	0.51	0.52	0.49
Morello	37	6	57	12	0	88	100	94	2	6	0.51	0.51	0.45	0.43	0.58	0.59	0.52	0.50
Mulberry	18	0	81	11	0	89	100	100	1	6	0.61	0.60	0.51	0.48	0.70	0.69	0.58	0.55
Atmosphere	55	7	38	50	2	47	100	93	5	6	0.40	0.42	0.39	0.38	0.46	0.48	0.45	0.43
Batik	61	9	30	52	3	46	100	91	6	6	0.37	0.39	0.37	0.36	0.43	0.45	0.43	0.42
Kiwi	48	8	44	44	2	54	100	92	5	6	0.44	0.45	0.41	0.40	0.51	0.52	0.47	0.46
Glade	32	6	63	17	0	83	100	94	2	6	0.53	0.53	0.47	0.44	0.61	0.61	0.53	0.51
Escape	36	5	58	19	0	81	100	95	3	6	0.51	0.51	0.45	0.43	0.58	0.59	0.52	0.50
Cyan	40	8	52	20	1	80	100	92	3	6	0.46	0.47	0.48	0.45	0.52	0.54	0.55	0.51
Lapis	18	0	82	12	0	88	100	100	1	6	0.61	0.60	0.51	0.48	0.70	0.69	0.58	0.56
Navy	9	0	91	6	0	94	100	100	1	6	0.60	0.60	0.62	0.55	0.69	0.69	0.71	0.63

Gtot and SC values in accordance with: EN Calculations 52022-1, EN Reference Glazing EN 52022-2

GLOSSARY

T: % Transmittance.

R: % Reflectiveness.

A: % Absorption.

UV Block: Percentage of UV light blocked by the fabric.

QRF: Quick Reference Factor.

CF: Colour Fastness.

gtot: The solar factor entering a building through a window and the shading device combined.

SC: Shading Co-efficient.

SG: Single Glazing.

DG: Double Glazing.

TGLE: Triple Glazing Low Emissivity.

DGLE: Double Glazing Low Emissivity.



UNICOLOUR

UNICOLOUR®

DIMOUT





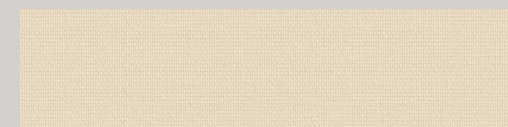
NARO

RP5645	2m
RP5646	2.5m
RP5647	3m
LP2397	89mm
LP5571	127mm



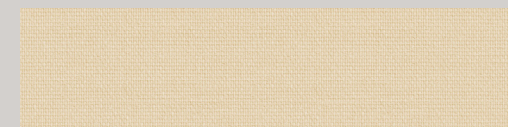
WHITE

RP2393	2m
RP2411	2.5m
RP5572	3m
LP2393	89mm
LP2411	127mm



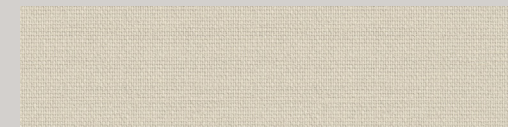
SHELL

RP5639	2m
RP5640	2.5m
RP5641	3m
LP5566	89mm
LP5567	127mm



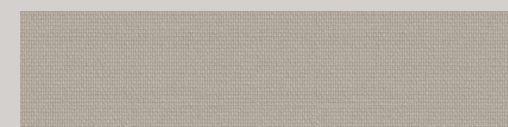
CREAM

RP2394	2m
RP2412	2.5m
RP5566	3m
LP2394	89mm
LP2412	127mm



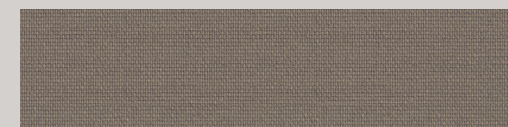
BEIGE

RP2395	2m
RP2413	2.5m
RP5562	3m
LP2395	89mm
LP2413	127mm



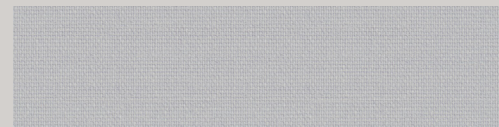
TAUPE

RP2396	2m
RP2414	2.5m
RP5571	3m
LP2396	89mm
LP2414	127mm



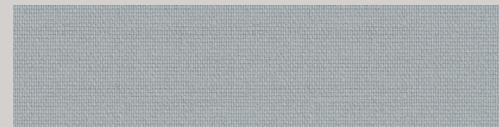
CHOCOLATE

RP2397	2m
RP2415	2.5m
RP5565	3m
LP2397	89mm
LP2415	127mm



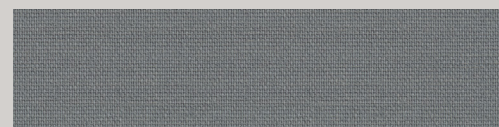
DOVE

RP2398	2m
RP2416	2.5m
RP5568	3m
LP2398	89mm
LP2416	127mm



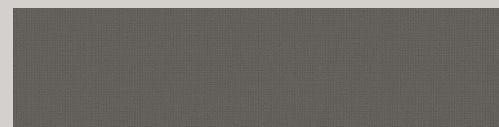
ASH

RP2399	2m
RP2417	2.5m
RP5561	3m
LP2399	89mm
LP2417	127mm



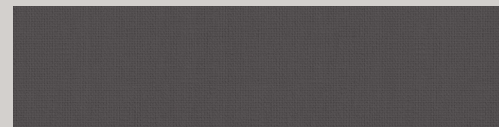
CHARCOAL

RP2400	2m
RP2418	2.5m
RP5564	3m
LP2400	89mm
LP2418	127mm



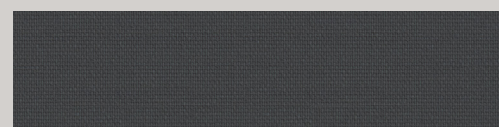
FLINT

RP5642	2m
RP5649	2.5m
RP5644	3m
LP5568	89mm
LP5569	127mm



KARA

RP5693	2m
RP5694	2.5m
RP5695	3m
LP5546	89mm
LP5547	127mm



BLACK

RP2401	2m
RP2419	2.5m
RP5563	3m
LP2401	89mm
LP2419	127mm



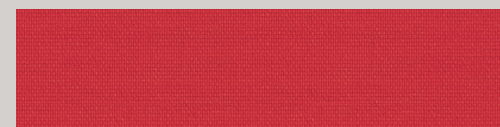
LUNA

RP5696	2m
RP5697	2.5m
RP5698	3m
LP5548	89mm
LP5549	127mm



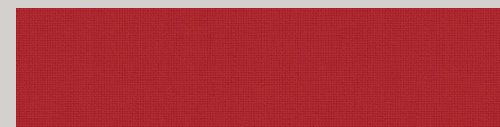
RAYON

RP5615	2m
RP5616	2.5m
RP5617	3m
LP5550	89mm
LP5551	127mm



RED

RP2402	2m
RP2420	2.5m
RP5570	3m
LP2402	89mm
LP2420	127mm



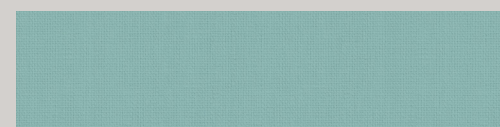
MORELLO

RP5648	2m
RP2420	2.5m
RP5650	3m
LP5572	89mm
LP5573	127mm



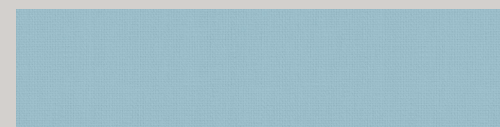
MULBERRY

RP5618	2m
RP5619	2.5m
RP5620	3m
LP5552	89mm
LP5553	127mm



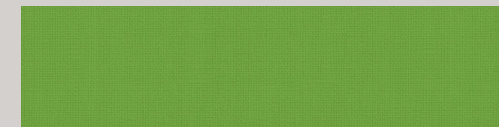
ATMOSPHERE

RP5621	2m
RP5622	2.5m
RP5623	3m
LP5554	89mm
LP5555	127mm



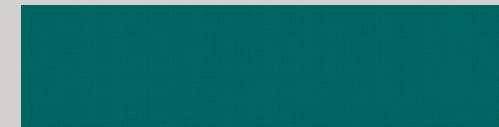
BATIK

RP5624	2m
RP5625	2.5m
RP5626	3m
LP5556	89mm
LP5557	127mm



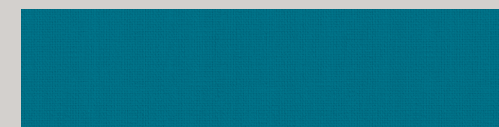
KIWI

RP5627	2m
RP5628	2.5m
RP5629	3m
LP5558	89mm
LP5559	127mm



GLADE

RP5630	2m
RP5631	2.5m
RP5632	3m
LP5560	89mm
LP5561	127mm



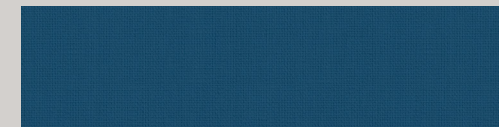
ESCAPE

RP5633	2m
RP5634	2.5m
RP5635	3m
LP5562	89mm
LP5563	127mm



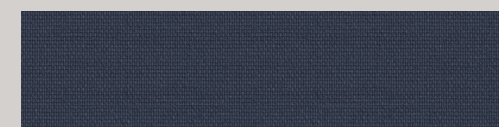
CYAN

RP2404	2m
RP2422	2.5m
RP5567	3m
LP2404	89mm
LP2422	127mm



LAPIS

RP5636	2m
RP5637	2.5m
RP5638	3m
LP5564	89mm
LP5565	127mm



NAVY

RP2410	2m
RP2428	2.5m
RP5569	3m
LP2410	89mm
LP2428	127mm

Unicolour® displays an array of 26 plain colourways specifically chosen for the contract environment.



UNICOLOUR®

Available in a selection of roller and vertical widths, Unicolour® provides the contract environment with a high quality, fire retardant compliant fabric.

Roller widths: 2m, 2.5m & 3m
Vertical widths: 89mm & 127mm

Achieving environmental standards in accordance with the ISO 14001 Environmental Management System, Unicolour® ensures that all products are manufactured under environmental protection without adding harmful substances.

UNICOLOUR® DIMOUT SPECIFICATION	
Colour Range	26
Roller Roll Length	30m
Roller Roll Width	2m / 2.5m / 3m
Vertical Roll Length	100m
Vertical Widths	89mm / 127mm
Fabric Composition	100% Polyester
Weight	228g/m2
Thickness	0.36mm +/- 0.05mm
Care & Washing	Do not soak. Clean by gently wiping with a sponge
Availability	Ex-Stock
Colour Fastness	BS EN ISO 105 - B02 : 2014 - BS6
Flammability Standards	BS 5867-2 : 2008 Type B in accordance with BS EN ISO 15025: 2002 Procedure A
Samples	Fabric samples available on request
Property	Dimout
Direction on Roll	Multi-directional

